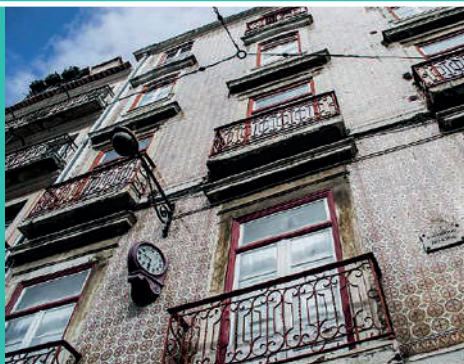


# POLO CULTURAL GAIVOTAS | BOAVISTA



## CULTURAL FACILITIES SERVING CULTURE IN LISBON

POLO CULTURAL GAIVOTAS BOAVISTA is an important and cosmopolitan center for artistic creation, belonging to the Lisbon City Council, located next to the Tagus River.

POLO's headquarter works to support Arts and Culture in Lisbon and receives professional and emerging artists, both Portuguese and international.

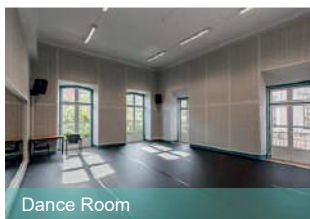


POLO CULTURAL  
**GAIVOTAS BOAVISTA**  
LOJA LISBOA CULTURA

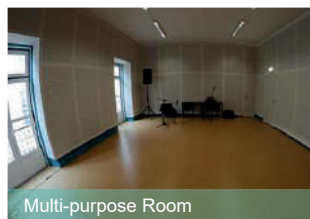
# CREATION CULTURAL FACILITIES AND RESOURCE CENTER



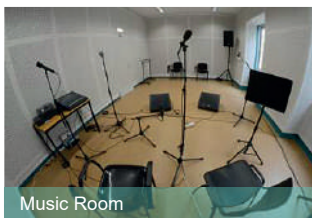
Theatre Room



Dance Room



Multi-purpose Room



Music Room



Training Room



The **Theater Room** is one of the most iconic rooms at POLO CULTURAL GAIVOTAS BOAVISTA, with walls displaying authorial work by visual artist Vhils. The **Dance Room** has privileged conditions for this artistic field, with an integral mirror wall. The **Multi-purpose Room** is a space for rehearsing artistic inter-connections and is also used in the design of scripts and work meetings.

The **Music Room** is equipped with special soundproofing conditions. The **Training Room** is used by individual artists, or groups of artists, for workshops, castings, ateliers, e-learning, etc.

## OFFICE ROOMS

POLO CULTURAL GAIVOTAS BOAVISTA has 5 Office Rooms, on the 2nd floor, for emerging cultural associations.

## ADDITIONAL EQUIPMENT

All facilities encompass: lockers, bathrooms, individual toilets (with shower), including accessibility for people with reduced mobility, and even a pantry (equipped with essential elements).



## THE COURTYARD AND THE CULTURAL PROGRAM



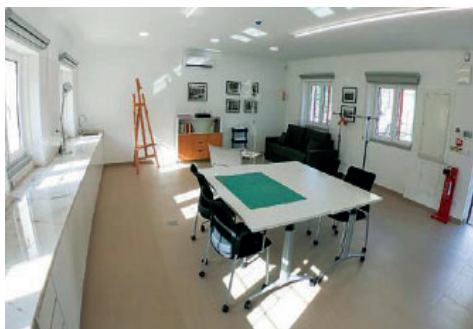
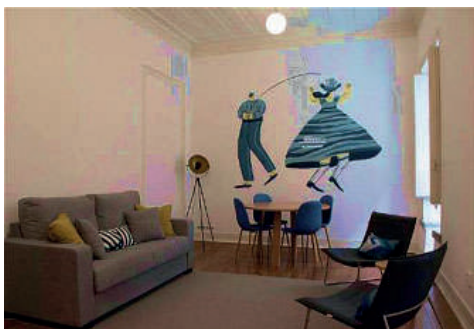
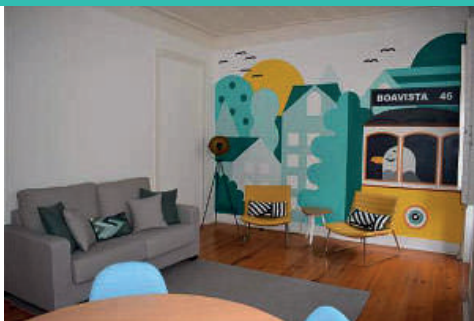
POLO's courtyard is one of the most charismatic in Lisbon. It is a space for conviviality and gastronomy, as well as a space for the exhibition of POLO's cultural program (cinema, theater, music, dance, literature).

### THE CULTURAL PROGRAM

POLO GAIVOTAS CULTURAL BOAVISTA has a seasonal cultural program, each year during the summer period.



## ARTISTIC RESIDENCES



POLO CULTURAL GAIVOTAS BOAVISTA has a set of residences, for temporary accommodation of Portuguese and foreign artists, non residents in Lisbon, who are in artistic creation process in town: several apartments in Boavista, next to the Tagus River, and houses in the Monsanto Forest Park.

# LOJA LISBOA CULTURA

## INFORMATION, SUPPORT AND TRAINING



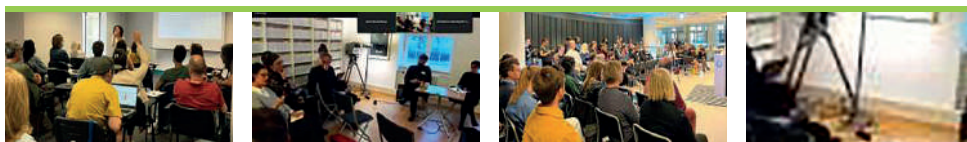
### INFORMATION AND SPECIALIZED SUPPORT

100 meters from POLO, LOJA LISBOA CULTURA operates as direct support desk to the artistic and cultural sector, specialized in issues related to the activity of professionals and organizations in the cultural sector (i.e. taxes, social security, copyright and related rights, Status of Cultural Professionals, international mobility, support and financing).

LOJA is a Mobility info Point (member of the international network 'On the Move').

### ANNUAL TRAINING PROGRAM

LOJA has an annual training program for culture agents, organized with partners in the cultural sector, as well as invitationonly courses held at LOJA, tailored to the needs of each cultural entity.



# LOJA LISBOA CULTURA

## INTERNATIONAL COOPERATION AND SPECIAL PROJECTS



### INTERNATIONAL COOPERATION

LOJA LISBOA CULTURA has several international links, enhancing the visibility and notoriety of the latest developments in the field of culture in Lisbon, and participation in artistic and cultural exchanges.

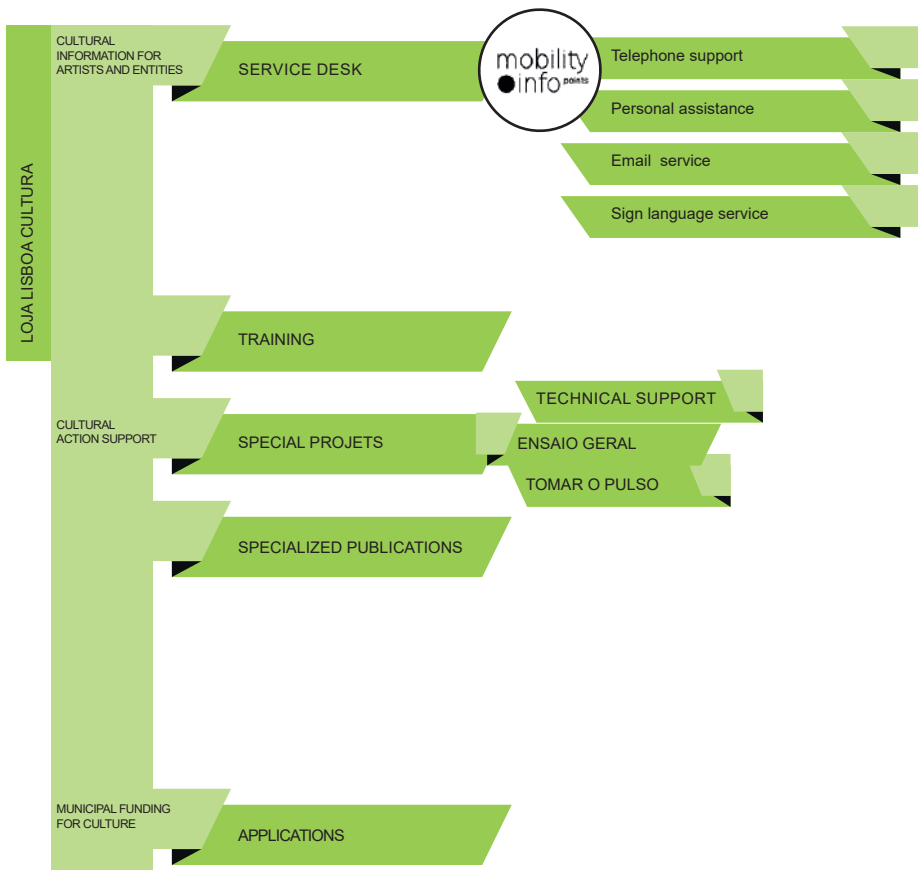
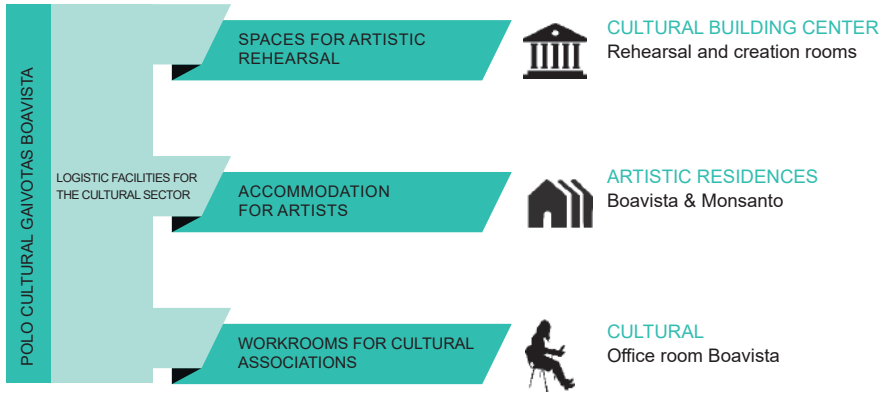
### SPECIAL PROJECTS

LOJA LISBOA CULTURA develops a set of programs to deepen knowledge of the cultural sector in Portugal, and to bring citizens closer to culture.

**Tomar o Pulso, Project** – invites cultural agents to participate in reflection sessions related to cultural activity.

**Ensaio Geral, Project** – provides concert hall access to less privileged audiences.


# SUMMARY VIEW




# CONTACTS

## POLO CULTURAL GAIVOTAS BOAVISTA CULTURAL BUILDING CENTER

Rua das Gaivotas n.º 8, Lisboa

 [pologaiivotasboavista@cm-lisboa.pt](mailto:pologaiivotasboavista@cm-lisboa.pt)

 218 172 600 (every day from 8:00 am to 11:30 pm)

38° 42' 33.07" N | 9° 9' 3.02" W

## POLO CULTURAL GAIVOTAS BOAVISTA ARTISTIC RESIDENCES

Residências da Boavista:

Rua da Boavista 46, Lisboa

38° 42' 32.04" N | 9° 8' 54.13" W

Residência de Monsanto Panorâmico:

Estrada Bela Vista 31, Lisboa

38° 43' 41.34" N | 9° 11' 10.66" W


Residência de Monsanto Liberdade:


Rua Inácio Pardelhas Sanchez 12, Lisboa

38° 44' 9.23" N | 9° 10' 20.32" W

## LOJA LISBOA CULTURA INFO POINT & SERVICES

Rua da Boavista 184, Lisboa

 [loja.lisboa.cultura@cm-lisboa.pt](mailto:loja.lisboa.cultura@cm-lisboa.pt)

 218 173 600 (weekdays, from 10:00 am to 6:00 pm)

38° 42' 32.63" N | 9° 9' 10.67" W



follow us on Facebook

<https://facebook.com/poloculturalgaivotas>